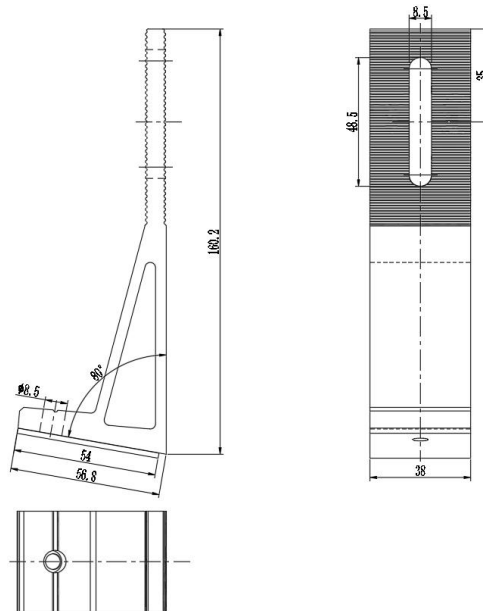
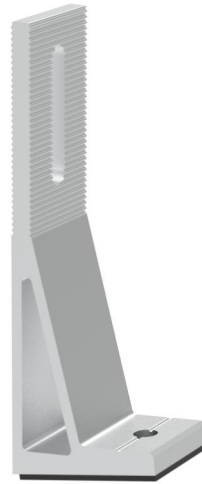


## Product Specification

HOP-TRB-F13 Ver: 4.1



<b>Name</b>	Rear L Feet 10°
<b>Stock Code</b>	TRB-F13
<b>Weight(g)</b>	172
<b>BOM</b>	HOP-H28-0038 (AL6005-T5) x 1 HOP-K17-0054 (EPDM) x 1
<b>Packing</b>	36pcs
<b>Carton size</b>	260 × 205 × 180